



Rodding Eye Cleanouts

The KRCR180/4"RD is a Sealed Double Contained Rodding Eye or Cleanout. It has a Round Body, Round Top Bottom Outlet and can be used for Heavy Duty Areas.

This is a sealed cleanroom rodding eye with a strong positive seal created by machining away a 10mm groove from a 20mm top plate. A 10mm top plate with a recessed 'o-ring' creates the seal.

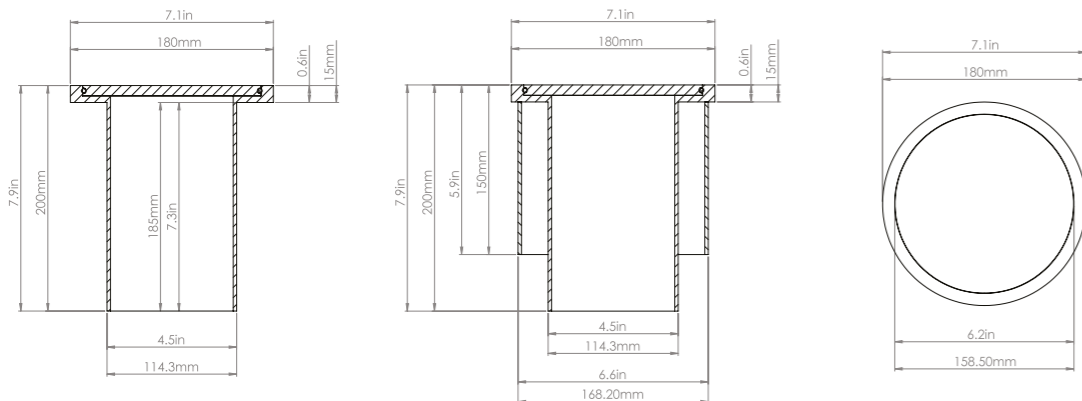
They are designed for use primarily in Pharmaceutical factories. They can be used in both light duty and very heavy duty trafficked areas (sealed gullies are most often used in laboratories or cleanrooms which are limited to pedestrian traffic - however, the 10mm top plate makes it possible to drive heavy factory traffic over these gullies).

In most cases a 4" or 6" SCH10 outlet is required because these are most popular with American Multinational Pharmaceutical companies who have scheduled stainless steel pipework to connect to, but this can easily be substituted for a 110mm or 160mm outlet pipe for European projects and polypropylene connections

The KRE200DC RD Gully is a Sealed Double Contained Rodding Eye or Cleanout.

INDUSTRIES

- BioPharma
- Pharmaceutical
- Laboratories



Product Code	Height	Top Diameter	Body Diameter	Outlet
KRCR180/4" RD	7.9in (200mm)	7.1in (180 mm)	4.5in (114 mm)	4" Sch 10
KRCR230/6" RD	7.9in (200mm)	9.0in (230mm)	6.6in (168mm)	6" Sch 10
Dual Skinned				
KRCR180/4"/6" RD	7.9in (200mm)	7.1in (180mm)	6.6in (168mm)	4"/6" Sch 10
KRCR230/6"/8" RD	7.9in (200mm)	9.0in (230mm)	8.63in (219mm)	6"/8" Sch 10



Sealed as standard remove with suction cup

