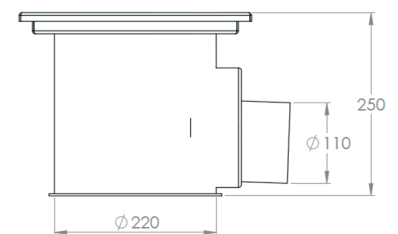
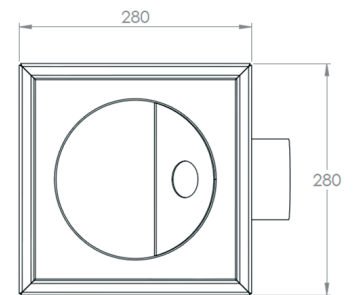
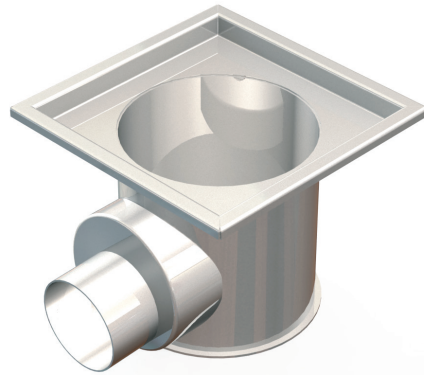


KENT KH280/110DS

The KH280/110DS Gully is a Round Body, Square Top/Side Outlet Gully for Heavy Duty Areas with High Flow Rates. They are designed for use primarily in Food/Beverage/Pharmaceutical factories. They can be used in both light duty and very heavy duty trafficked areas (depending on the grating chosen). It has a deep Swage as standard (DS = Deep Swage) and so takes all 25mm deep gratings offered by Kent (Perforated, Mesh, Heelproof Mesh, Factory Ladder, Heelproof Ladder, Gratings). When used with Heelproof Gratings it is suitable also for Civil Projects. In most cases a 110mm or 160mm outlet is required, but this can easily be substituted for a 4" or 6" SCH10 outlet pipe. It is trapped as standard with the Kent Weir Trap.

Features

- Grade 304 (1.4301) or 316 (1.4401) Stainless Steel to BS EN 10088
- Strong
- Short lead time
- Usable in both heavy and light duty areas
- Suitable for internal factory drainage and external civil drainage projects



Product Code	Height	Width	Body Diameter	Outlet	Swage	Flow Rate*
KH280/110DS	250	280	220	110	25	5.20 l/s
KH330/110DS	250	330	270	110	25	5.20 l/s
KH430/160DS	300	430	370	160	25	10.60 l/s

* flow rate is also dependant on grating chosen

Specify: Kent KH280/110DS trapped industrial gully; 280mm x 280mm ; grade 304 stainless steel; complete with _____ grating.

Choose the product code from the dimensions table above.
Add specification options from Page 10-12.

Choose Grating from page 83-92

BS EN1253 Loading Class L15 / R50 / M125 / N250 / P400

This gully can be subjected to very heavy loads but must have the correct heavy duty grating to achieve these loads.