

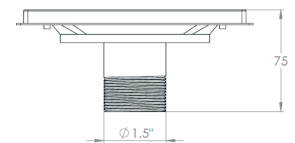
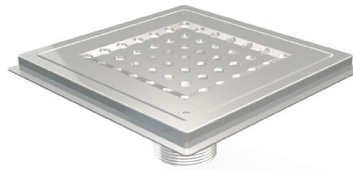
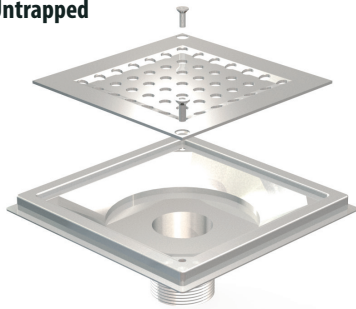
KENT KVT162/1.5" BSP – Commercial Gully (Pedestrian)

This is a modified version of our KVT162/110 Floor Gully to suit a 1.5" BSP or 2" BSP bottom outlet. It is supplied as standard with a lockdown perforated grating.

Features

- Grade 304 (1.4301) or 316 (1.4401) Stainless Steel to BS EN 10088
- Satin finish as standard

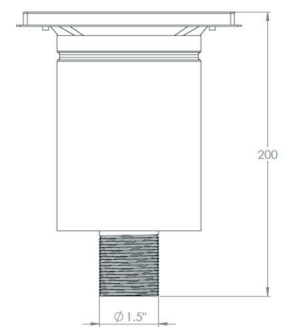
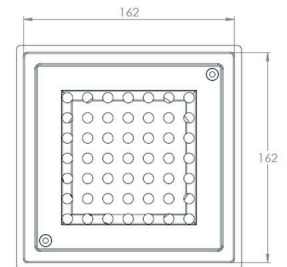
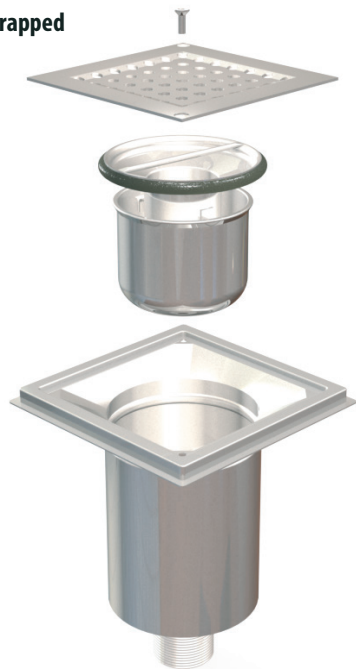
Untrapped



1.5" BSP Socket is most commonly required

1.5" BSP Nipple option is shown here

Trapped



Product Code	Height	Width	Depth	Outlet	Flow Rate	Description
KVT162/1.5" BSP	75	162	162	1.5" BSP	0.9 l/s	Fixed Height Untrapped
KVT162/1.5" BSP(T)	200	162	162	1.5" BSP	0.9 l/s	Fixed Height Trapped
KVT162/2" BSP	75	162	162	2" BSP	1.1 l/s	Fixed Height Untrapped
KVT162/2" BSP(T)	200	162	162	2" BSP	1.1 l/s	Fixed Height Trapped

**BS EN1253
Loading Class K3**

Specify Kent KVT162/1.5" BSP Socket* Floor Gully. 162mm x 162mm, fixed height floor drain. Grade 304 stainless steel with a satin polish finish.

* note: socket outlets are standard, can be changed for nipple outlets when required



Barefoot



Pedestrian