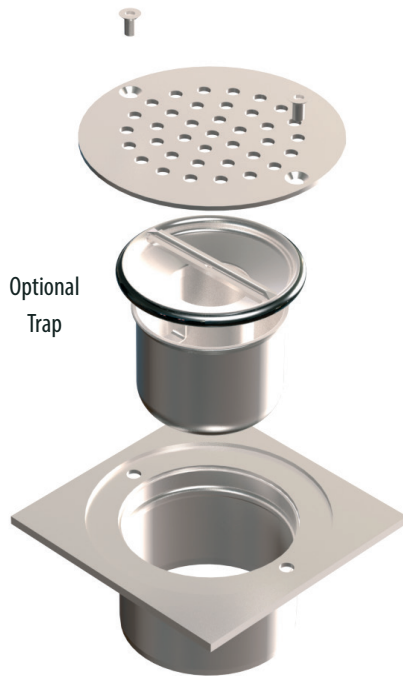


KENT KVT170 (SQPF) - Commercial Gully (High Footfall)

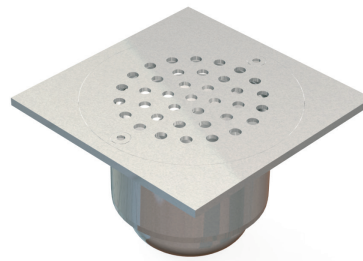
The KVT170 (SQPF) Gully is a Square Top stainless steel gully with Circular Perforated Grating for tiled and poured floor areas. It has a heavier duty top than our KVT162 and can take heavier traffic, but this top is primarily 'chunky' for aesthetic reasons. It is supplied as standard with a lockdown grating.

Features

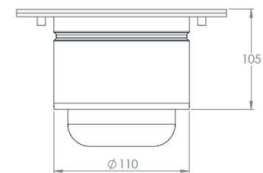
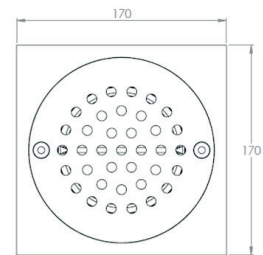
- Grade 304 (1.4301) or 316 (1.4401) Stainless Steel to BS EN 10088
- Satin finish as standard
- Customised perforated patterns available
- Lock down as standard



Optional Trap



Square Top with Perforated Cover



Pedestrian



Barefoot



Forklift

BS EN1253 Loading Class K3 (L15 or R50 or M125 variations available)

Product Code	Height	Width	Depth	Outlet	Flow Rate	Description
KVT170/110TP (SQPF)	105	170	170	110	1.4 l/s	Top Part Only Bottom Outlet 110mm
KVT170/110 (SQPF)	200-250	170	170	110	1.4 l/s	Adjustable Height 2 Part Bottom Outlet - See Page 4
KHT170/50(SQPF)	140-185	170	170	50	0.9 l/s	Adjustable Height 2 Part Side Outlet 50mm - See Page 4
KHT170/1.5"(SQPF)	140-185	170	170	1.5"	0.9 l/s	Adjustable Height 2 Part Side Outlet 1.5" - See Page 4
Trap						110mm Trap with 50mm water seal

Specify Kent KVT170/110TP (SQPF) Floor Gully. 170mm x 170mm, fixed height floor drain. Grade 304 stainless steel with a satin polish finish, supplied with KFT110 Trap.