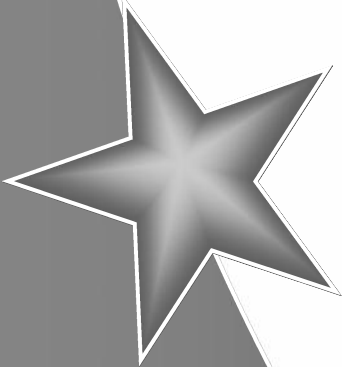
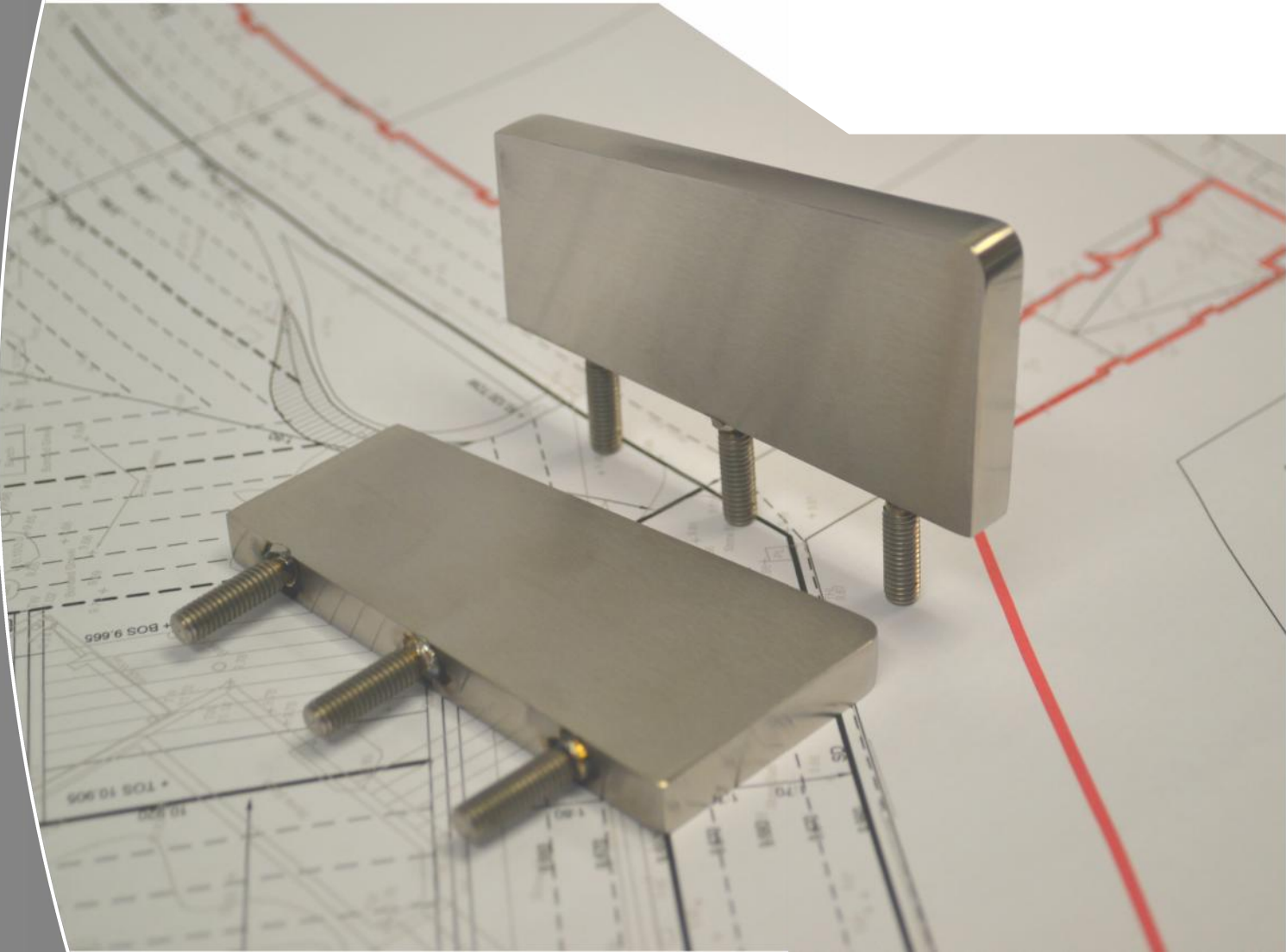


Kent Anti Skate Fin Stud



KENT ANTI SKATE FIN STUD (KFS 100/50/35)**Specify:**

Kent Anti Skate Fin Studs KTWS/25/5/FDG(2); 100mm Width, 10mm thick, 50mm height ; 3 pins; Grade 316L Stainless Steel; Satin Finish 320 Grit Polished.

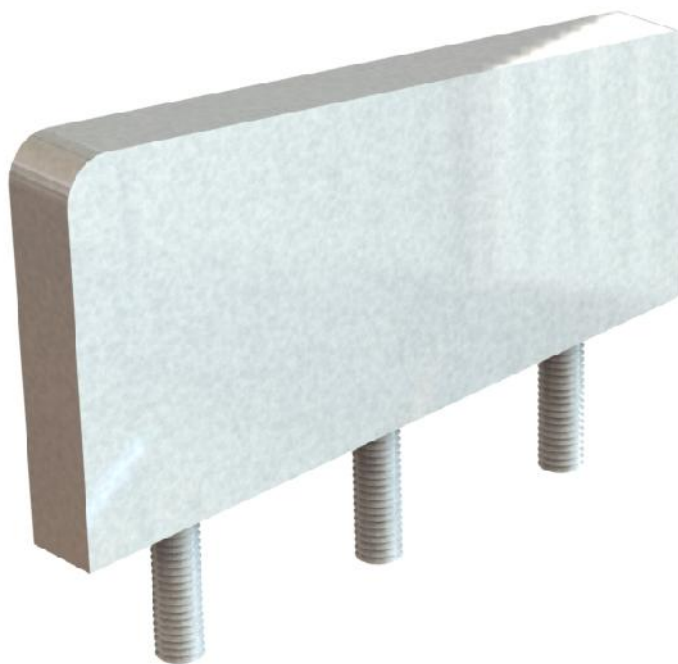
Description:

Kent Fin Studs are used to deter unwanted skateboarding in order to prevent damage to street furniture and stonework elements. The Fins eliminate the long, smooth edges, so skateboarders can no longer 'grind' their boards along the edges.

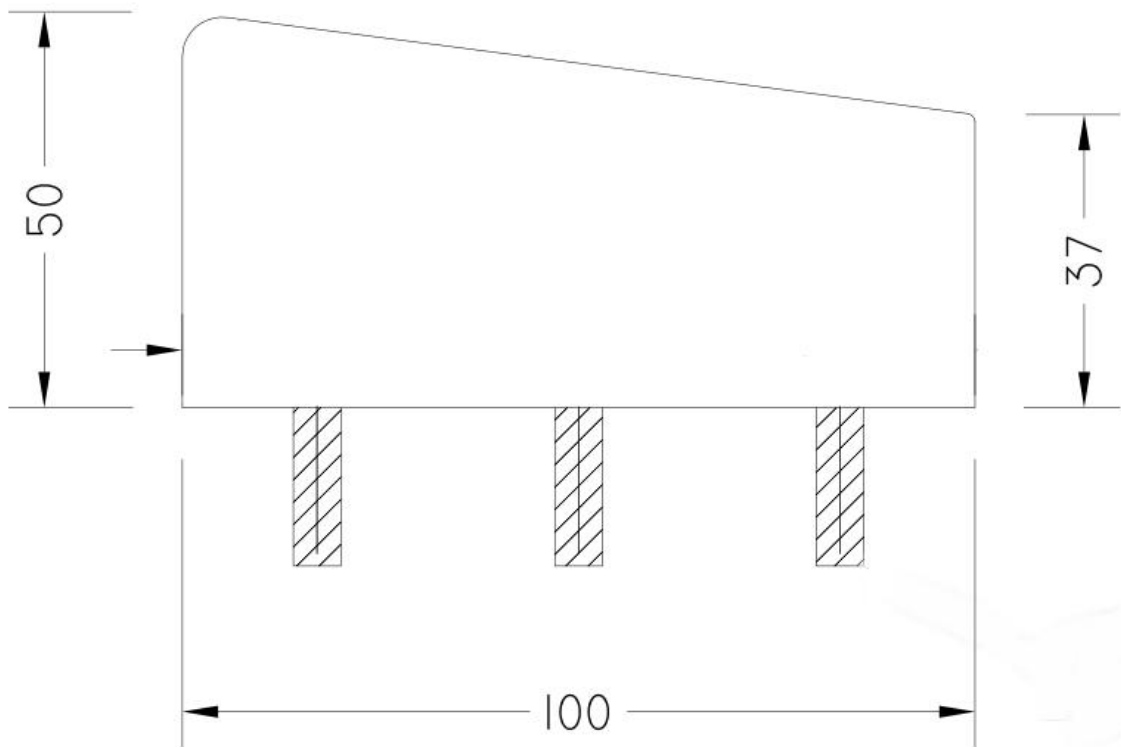
The Stainless Steel material is ideal for high traffic pedestrian areas and it does not adversely effect the aesthetics of the elements they are protecting.

Features:

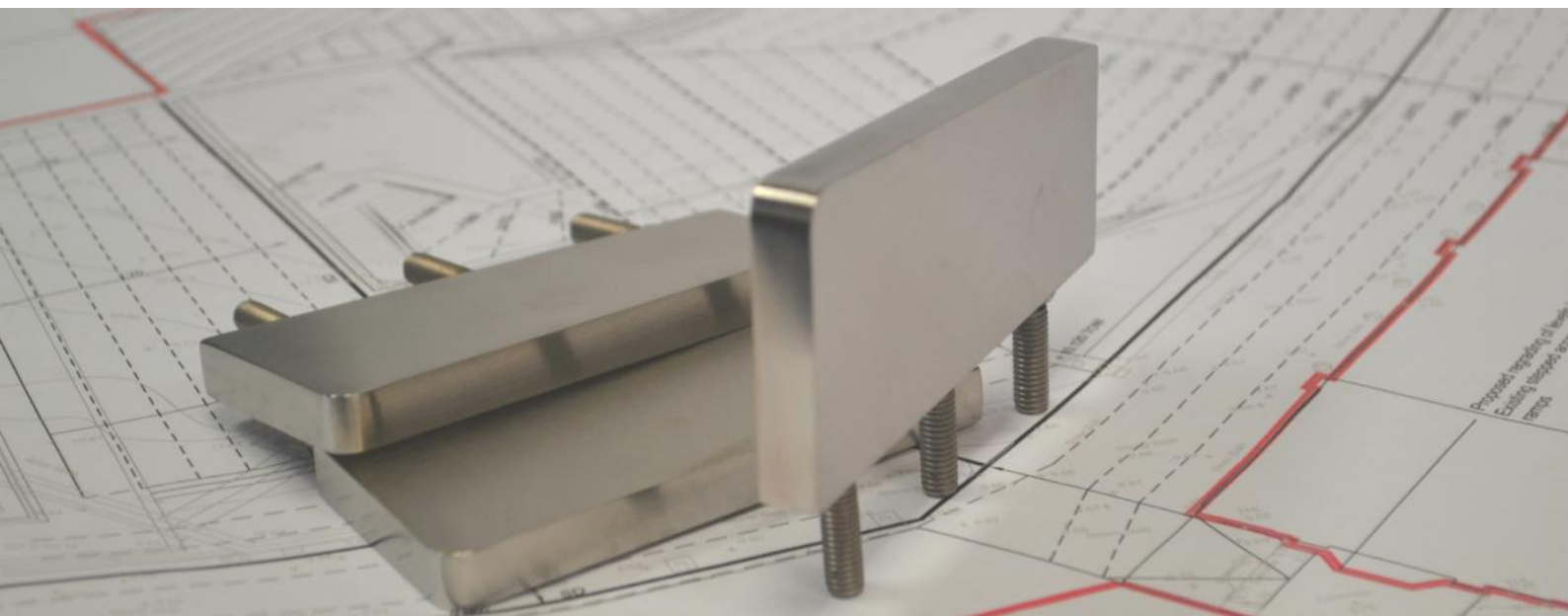
- Grade 316 Stainless steel
- 10mm Thick Steel
- Polished edges
- Satin Finish 320 Grit Polish
- 3 Installation pins



KENT ANTI SKATE FIN STUD (KFS 100/50/35)



Product Code	Height	Width	Pins
Kent Anti Skate Fin Stud (KFS/100/50/37)	50/37mm	100mm	3





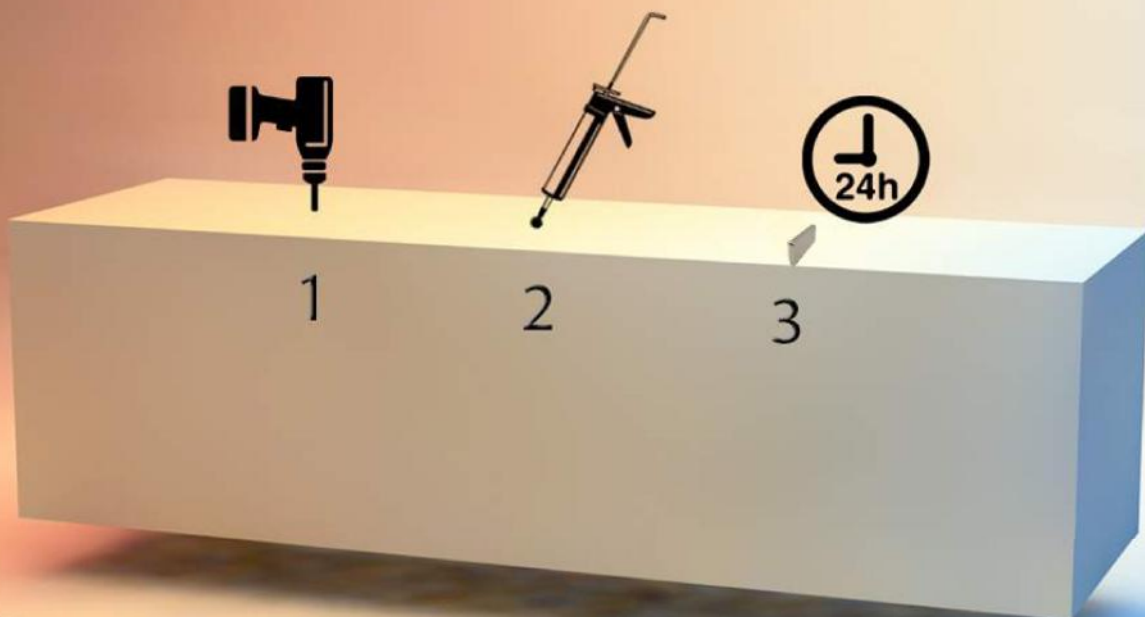
Installation of Studs

Step 1: Drill x3 10mm Diameter hole 30mm deep

Step 2: Clean out the drilled hole

Step 3: Fill with chemical mortar (Kent Stainless recommend MIT-SE Mortar)

Step 4: Insert the Anti Skate Fin Stud and leave to set for 24 hours



Maintenance of Stainless Steel

Clean the stainless steel components using warm water with a mild detergent with a non-abrasive cloth or sponge. Heavier stains may require the use of a nylon-scouring pad or a stainless steel cleaner.

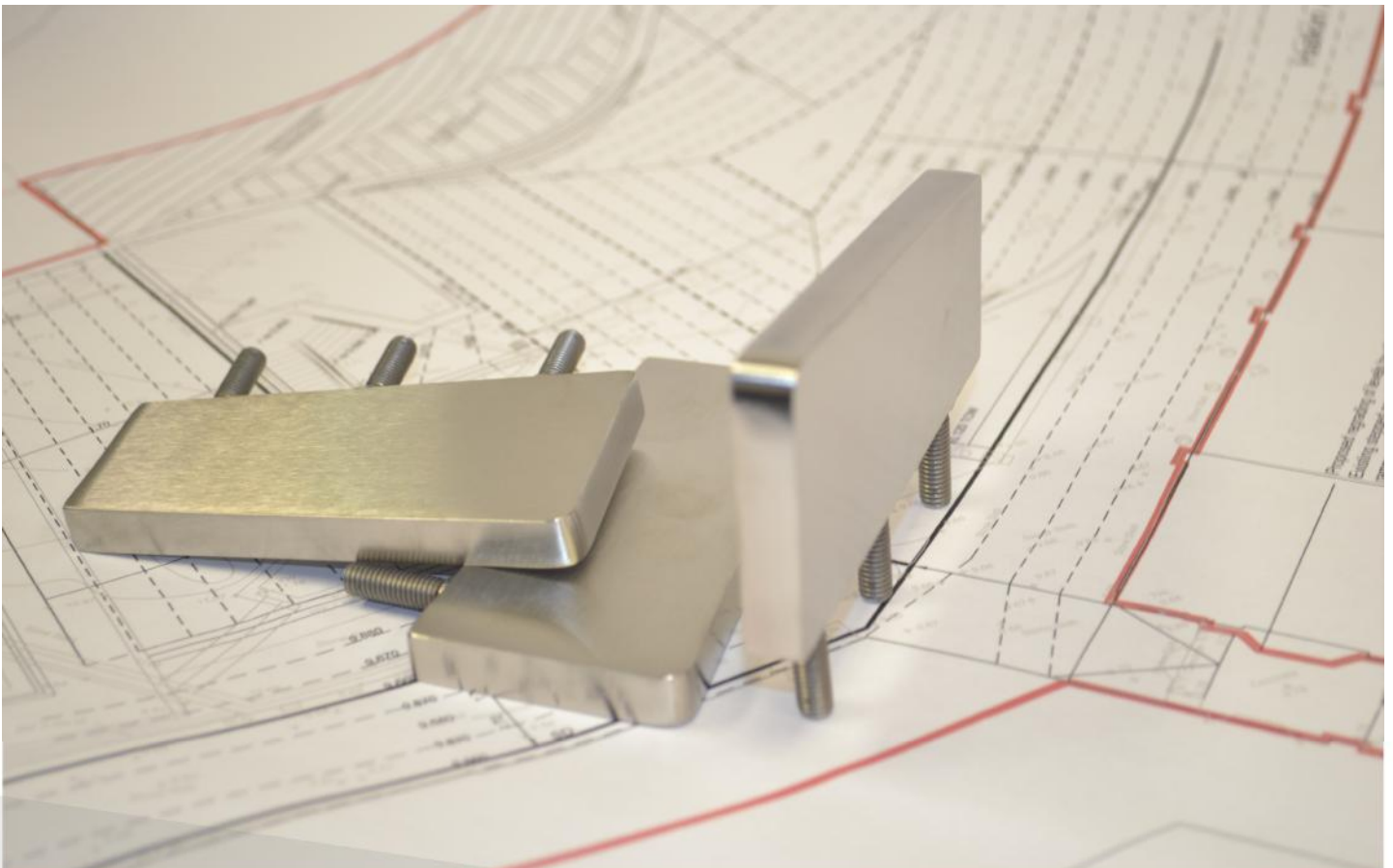
To remove paint or graffiti use a cloth and Alkaline or solvent paint strippers according to type of paint. In the case of a bead blasted finish, where abrasive cleaning is required, always use a random circular rubbing action with a cloth.

In the case of brushed finishes the surface consists of uniform fine 'scratches' running in one direction so where abrasive cleaning is required always use a straight back and forward rubbing action in the direction of the grain using soap and warm water.

Rust spots or 'tea stains' can occur on the surface of the material, these are normally caused by contamination from ordinary mild steel, particularly in areas where construction work has been undertaken. Such stains can be removed using Rust Remover 410.

In cases where the surface is severely stained because of severe environmental conditions or scratched due to misuse, it may still be possible to restore the original finish using chemicals such as Oxalic Acid solution. There are many stainless steel polishes available to enhance the surface finish.

We recommend Mister Stainless Ltd. as a provider for stainless steel cleaning products.



KENT ANTI SKATE FIN STUD (KFS 100/50/35)

Specify

Customise your size:

*Or go with our standard
100mm width x 50mm
height.*

Specify:

Kent Anti Skate Fin Studs KTWS/25/5/FDG(2); 100mm Width, 50mm Height, 10mm Thick;
Grade 316L Stainless Steel; Satin Finish 320 Grit Polished

Choose your steel:

*Grade 304 Stainless steel
Grade 316 Stainless steel*

Choose your finish

*Satin Finish
Satin 320 Grit Polish*

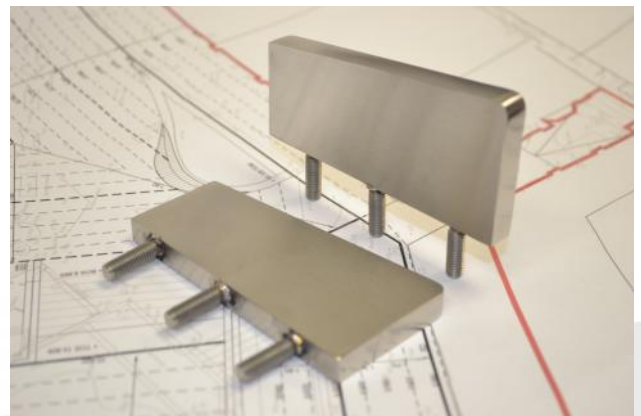
Options

Satin Finish

Satin finish 320 Grit Polish

Grade 304 Stainless Steel

Grade 316 Stainless Steel



Testimonials



“We have no hesitation in recommending Kent Stainless and look forward to working with them on public building projects in the future”

- ARUP



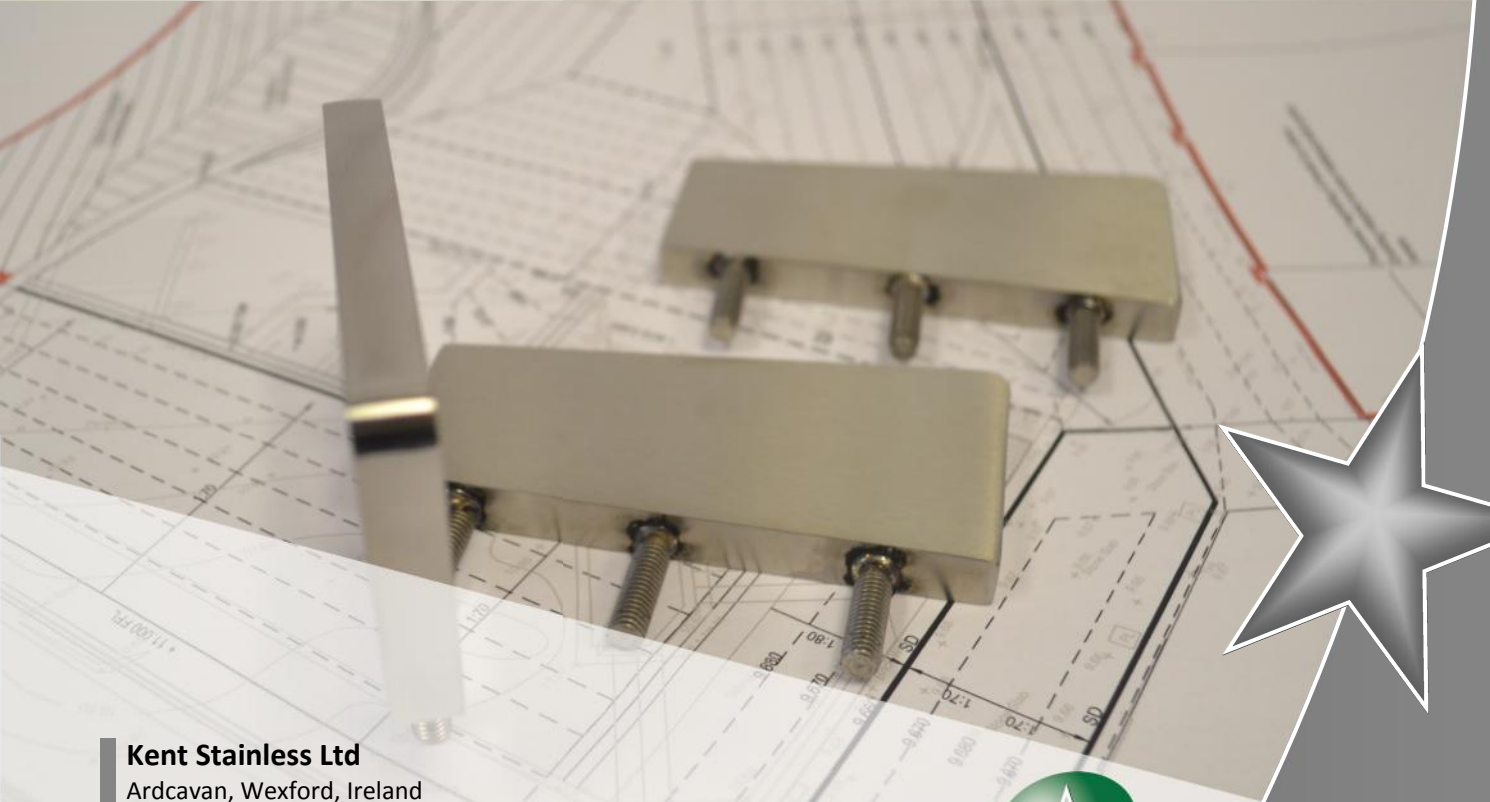
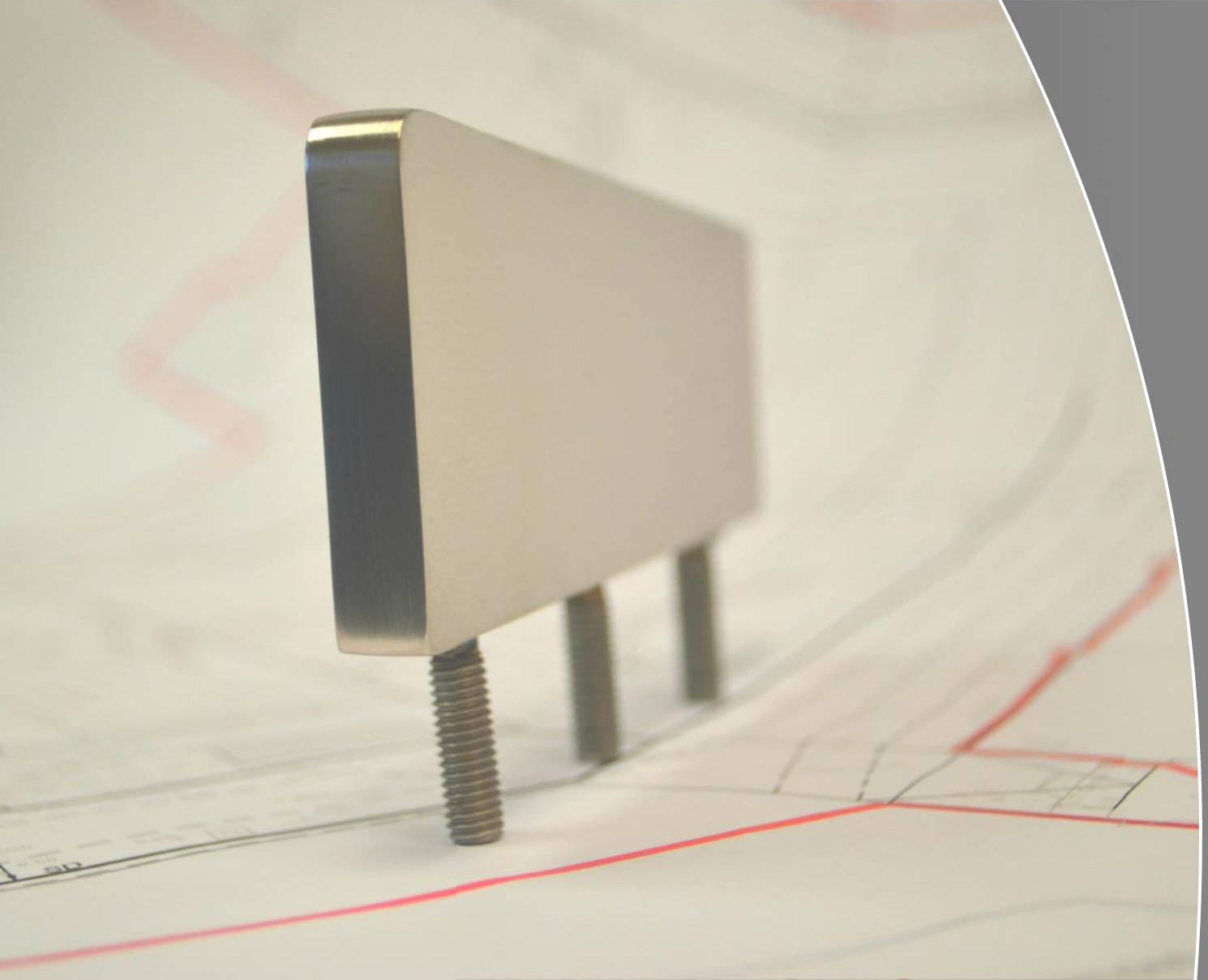
“ Kent Stainless scored highly in all regards again”

- BAM



“ Your timely delivery and seamless integration with main contractor Skanska made the overall project a huge success ”

- Forward Swindon



Kent Stainless Ltd
Ardcavan, Wexford, Ireland

TEL NO: +353 53 9143216
UK FREEPHONE: 0800 376 8377
FAX: +353 53 9141802
WEB: www.kentstainless.com
EMAIL: info@kentstainless.com

